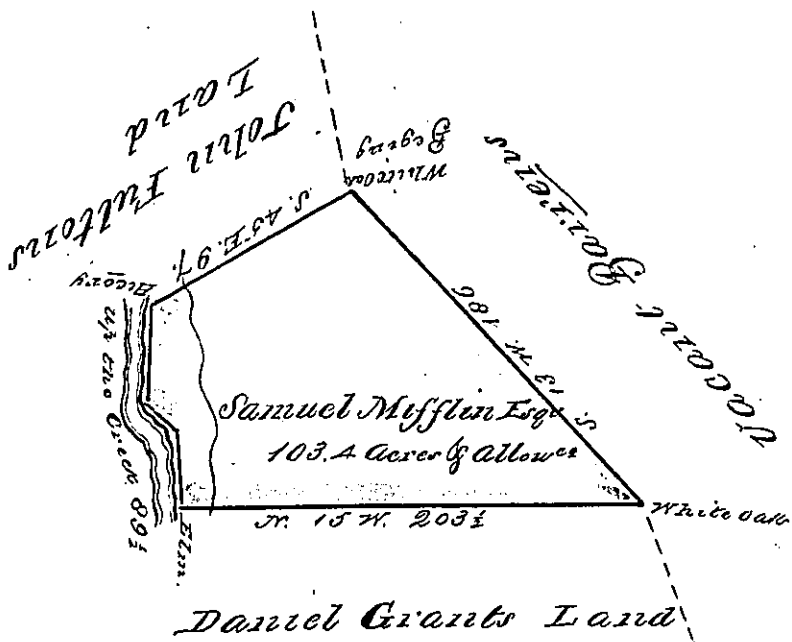


Courses & Distances
up Standing Stone Creek

- N. 78 E. 40 1/2
- N. 34 E. 17
- N. 74 E. $\frac{32}{89 1/2}$



The draught of a Tract of Land called
"Connection" Situate on Standing Stone Creek
in the County of Cumberland containing
one hundred and three acres and Twenty
Three Perches with the usual allowance
of Six acres p cent for Roads -

Surveyed for Samuel Mefflin Esq. the
5th day of September Anno Dom: 1766 In
Pursuance of an Order of Survey bearing
Date at Philad^a the 10th day of August Anno
Dom: 1766 No. 18.

John Lukens Esq. Sur^r. Genl
of the Province of Pennsylvania

J. M. Maclay Esq. Sur^r.

IN TESTIMONY that the above is a copy of the original remaining on file in the
Department of Internal Affairs of Pennsylvania, made con-
formably to an Act of Assembly approved the 16th day of
February, 1833, I have hereunto set my Hand and caused
the Seal of said Department to be affixed at Harrisburg, this

Twelfth day of January 1877

Wm. M. Handley
Secretary of Internal Affairs